

Perpetual Investment Funds

PERPETUAL STRATEGIC CAPITAL FUND - CLASS S

January 2025

FUND FACTS

Investment objective: To provide investors with long-term capital growth through investment in a concentrated portfolio of quality shares and outperform the stated benchmark (before fees and taxes) over rolling 3-year periods.

FUND BENEFITS

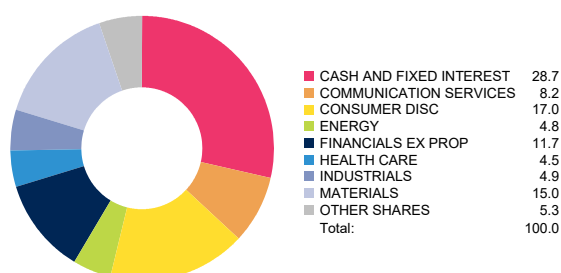
A concentrated, high conviction portfolio with a focus on active ownership where Perpetual has a long history. Companies where we are active owners will be positioned in the portfolio alongside the best ideas of our Portfolio Managers.

FUND RISKS

All investments carry risk and different strategies may carry different levels of risk. The relevant product disclosure statement or offer document for a fund should be considered before deciding whether to acquire or hold units in that fund. Your financial adviser can assist you in determining whether a fund is suited to your financial needs.

Benchmark:	S&P/ASX 300 Accum. Index
Inception Date:	October 2023
Size of Portfolio:	\$20.18 million as at 31 Dec 2024
APIR:	PER9275AU
Management Fee:	0.65%*
Performance Fee:	25% of outperformance*
Investment style:	Active, fundamental, bottom-up, value
Suggested minimum investment period:	Seven years or longer

PORTFOLIO SECTORS



NET PERFORMANCE - periods ending 31 January 2025

	Fund	Benchmark	Excess
1 month	0.87	4.46	-3.59
3 months	1.65	4.98	-3.33
1 year	7.69	15.09	-7.41
2 year p.a.	-	-	-
3 year p.a.	-	-	-
4 year p.a.	-	-	-
5 year p.a.	-	-	-
7 year p.a.	-	-	-
10 year p.a.	-	-	-
Since incep. p.a.	13.94	24.09	-10.14

Past performance is not indicative of future performance. Returns may differ due to different tax treatments.

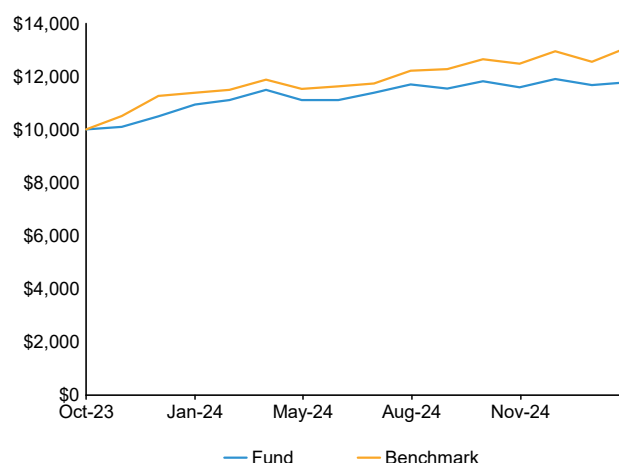
PORTFOLIO FUNDAMENTALS[^]

	Portfolio	Benchmark
Price / Earnings*	17.8	18.5
Dividend Yield*	3.6%	3.5%
Price / Book	1.6	2.3
Debt / Equity	18.9%	36.7%
Return on Equity*	9.5%	12.9%

[^] Portfolio Fundamentals are compiled using our methodology and provided only for the purpose of illustrating the Fund's investment style in action. These figures are forecast estimates, calculated based on consensus broker estimates where available, and should not be relied upon. Dividend Yield is a dividend forecast of underlying securities for the portfolio and does not reflect the distributions to be determined for the fund.

* Forward looking 12-month estimate.

GROWTH OF \$10,000 SINCE INCEPTION



This publication has been prepared by Perpetual Investment Management Limited (PIML) ABN 18 000 866 535, AFSL No 234426. It is general information only and is not intended to provide you with financial advice or take into account your objectives, financial situation or needs. You should consider, with a financial adviser, whether the information is suitable for your circumstances. To the extent permitted by law, no liability is accepted for any loss or damage as a result of any reliance on this information.

The PDS for the relevant fund, issued by PIML, should be considered before deciding whether to acquire or hold units in that fund. The PDS and Target Market Determination can be obtained by calling 1800 022 033 or visiting our website www.perpetual.com.au. No company in the Perpetual Group (Perpetual Limited ABN 86 000 431 827 and its subsidiaries) guarantees the performance of any fund or the return of any investor's capital. Total return shown for the fund(s) have been calculated using exit prices after taking into account all of Perpetual's ongoing fees and assuming reinvestment of distributions. No allowance has been made for contribution or withdrawal fees or taxation (except in the case of superannuation funds, as applicable). Past performance is not indicative of future performance.

MORE INFORMATION

Adviser Services 1800 062 725

Investor Services 1800 022 033

Email investments@perpetual.com.au

www.perpetual.com.au

