

## Perpetual Pure Series Funds

# PERPETUAL PURE EQUITY ALPHA FUND - CLASS A

December 2024

### FUND FACTS

**Investment objective:** Aims to generate positive returns over a market cycle irrespective of market conditions by investing in both long and short positions of predominantly Australian shares.

### FUND BENEFITS

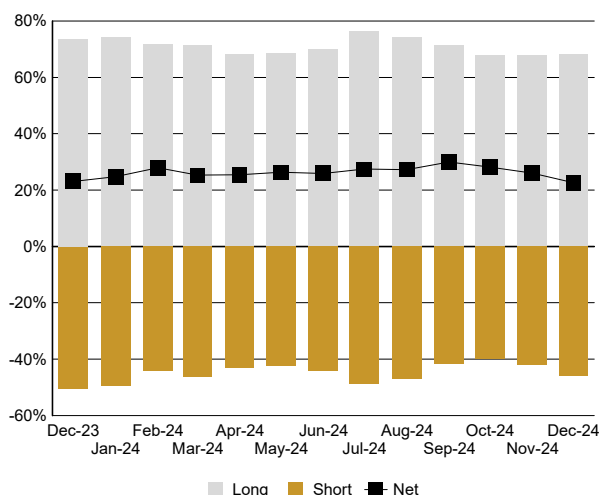
The Fund aims to achieve performance objectives by adopting a bottom-up stock selection process for both long and short positions, combined with a top down approach to managing market exposure. Decisions to buy or sell are based mainly on fundamental stock analysis, complemented by the identification of special opportunities.

### FUND RISKS

All investments carry risk and different strategies may carry different levels of risk. The relevant product disclosure statement or offer document for a fund should be considered before deciding whether to acquire or hold units in that fund. Your financial adviser can assist you in determining whether a fund is suited to your financial needs.

|   |                                       |
|---|---------------------------------------|
| <b>Inception Date:</b>                      | March 2012                            |
| <b>Size of fund:</b>                        | \$269.14 million as at 30 Sep 2024    |
| <b>APIR:</b>                                | PERo668AU                             |
| <b>Fund Managers:</b>                       | Anthony Aboud                         |
| <b>Management Fee:</b>                      | 1.28%*                                |
| <b>Performance Fee:</b>                     | 20.5% of outperformance*              |
| <b>Performance Hurdle:</b>                  | RBA Cash Rate Index                   |
| <b>Investment style:</b>                    | Active, fundamental, bottom-up, value |
| <b>Suggested minimum investment period:</b> | Five years or longer                  |

### HISTORICAL MARKET EXPOSURE



### TOP 5 STOCK HOLDINGS (LONG)

| Stock Holding               | % of Portfolio |
|-----------------------------|----------------|
| Flutter Entertainment Plc   | 6.5%           |
| Servcorp Limited            | 5.0%           |
| Cobram Estate Olives Ltd.   | 3.6%           |
| Goodman Group               | 2.8%           |
| Premier Investments Limited | 2.7%           |

### GEOGRAPHIC LOCATION OF MATERIAL ASSETS

The Fund holds no single international asset representing more than 10% of the Fund's net asset value.

### NET PERFORMANCE- periods ending 31 December 2024

|              | Fund  | RBA Cash Rate Index* |
|--------------|-------|----------------------|
| 1 month      | -0.19 | 0.37                 |
| 3 months     | 3.08  | 1.10                 |
| 1 year       | 11.65 | 4.46                 |
| 2 year p.a.  | 5.62  | 4.20                 |
| 3 year p.a.  | 6.25  | 3.22                 |
| 4 year p.a.  | 7.00  | 2.43                 |
| 5 year p.a.  | 7.76  | 2.01                 |
| 7 year p.a.  | 6.18  | 1.82                 |
| 10 year p.a. | 5.94  | 1.81                 |
| Since incep. | 7.00  | 2.05                 |

RBA Cash Rate Index is the Performance Hurdle.

### PORTFOLIO SECTORS

|                               | Long        | Short        | Net         |
|-------------------------------|-------------|--------------|-------------|
| Communication Services        | 5.8         | -0.3         | 5.6         |
| Consumer Discretionary        | 15.6        | -7.9         | 7.7         |
| Consumer Staples              | 9.1         | -6.3         | 2.8         |
| Energy                        | 3.2         | -0.3         | 2.9         |
| Financials ex Property Trusts | 7.7         | -9.1         | -1.5        |
| Health Care                   | 1.6         | -2.8         | -1.2        |
| Industrials                   | 8.1         | -8.7         | -0.7        |
| Information Technology        | 0.0         | -3.2         | -3.2        |
| Materials                     | 7.6         | -2.3         | 5.2         |
| Other Shares                  | 0.0         | 0.0          | 0.0         |
| Property Trusts               | 0.0         | 0.0          | 0.0         |
| Real Estate                   | 7.5         | -4.2         | 3.3         |
| Utilities                     | 1.8         | -0.1         | 1.7         |
| <b>Total</b>                  | <b>67.9</b> | <b>-45.3</b> | <b>22.6</b> |

### PORTFOLIO FUNDAMENTALS^

|                   | Portfolio |
|-------------------|-----------|
| Price / Earnings* | 18.8      |
| Dividend Yield*   | 3.0%      |
| Price / Book      | 2.1       |
| Debt / Equity     | 31.0%     |
| Return on Equity* | 12.9%     |

^ Portfolio Fundamentals are compiled using our methodology and provided only for the purpose of illustrating Perpetual's investment style in action. These figures are forecast estimates, calculated based on consensus broker estimates where available, and should not be relied upon. Dividend Yield is a dividend forecast of underlying securities for the portfolio and does not reflect the distributions to be determined for the fund.

\* Forward looking 12-month estimate.

\* Information on Management Costs (including estimated indirect costs) and a full description of the Fund's performance fee is set out in the Fund's PDS.

## MARKET COMMENTARY

Markets sold off in December after their strong bounce in November. The S&P/ASX300 Accumulation Index gave up -0.81% with Materials down a significant -11.75% while Real Estate, Energy and Consumer Staples all gave up over 5%. Euphoria over hoped-for tax cuts and de-regulation from the incoming Trump administration were tempered by the growing reality of governing with a narrow Republican majority in the House of Representatives. Squabbling over spending measures nearly forced the US federal government into shutdown before Christmas. Combined with resurgent economic confidence this led to US bond yields rising, with the yield on the US 10 year threatening to rise above the 4.7% peaks in April. The Australian economy sent mixed signals. Employment growth remained robust, at 35,600 in November, pushing the unemployment rate down to 3.9%, but most jobs were being created by government as public spending continued to grow. Meanwhile GDP slowed to just 0.8% for the year ended Q3 with just 0.3% for the quarter. GDP per capita fell -0.3% the seventh consecutive quarterly decline.

## PORTFOLIO COMMENTARY

The portfolio's largest positions include Flutter Entertainment Plc, Servcorp Limited and Cobram Estate Olives Ltd. Conversely, the portfolio's largest short positions vary across sectors but include selected Financials, Consumer Staples and Infrastructure names.

The overweight to Sigma Healthcare contributed to performance as it was one of the strongest performing stocks in the market during the quarter (+82.46%) after the ACCC announced it did not oppose the Sigma Healthcare Limited and CW Group Holdings Limited merger creating a new listed retail giant. The acquisition creates a larger high-quality company which operates in a favourable oligopolistic wholesale market and has an industry leading distribution network. We believe that the quality of the combined business will improve as the group moves to become an integrated wholesaler as well as a pharmacy franchisor with dominant market share and a pipeline of pharmacists to continue to expand their franchise network. We have admired Chemist Warehouse for a long time and believe that it is probably the best franchisor/retailer in Australia. Chemist Warehouse brings with it a high-quality management team to be instilled into the new combined board through founders Mario Verrocchi and Jack Gance as well as further long-term synergies to be realised by the group.

NewsCorp was a strong contributor during the quarter (+22.71%). Towards the end of the period NewsCorp announced the sale of Foxtel to DAZN which will bring the NewsCorp balance sheet back to a healthy net cash position. NewsCorp remains our favoured media exposure encompassing some of the highest quality media exposures in the world and with strong growth opportunities through REA group and realtor.com.

The overweight position in Iluka Resources detracted from performance (-27.55%) over the quarter as the market was broadly underwhelmed by the update from the company on the rare earth refinery with particular concern around potential offtake pricing. Iluka is a major producer of rutile and synthetic rutile that is used to produce pigment (paint) and largest producer of zircon that is used to produce ceramics (tiles) and a recovery in these markets can be met by releasing excess inventory and reducing working capital before production is restarted. Iluka has a very strong balance sheet (net cash) and also owns a valuable stake in Deterra Royalties, which was spun-off in an IPO.

BlueScope Steel Limited detracted from performance (-15.81%) as the steel sector continued to face headwinds and downgrades from the sell-side. While short-term steel spread dynamics remain challenging, we believe the share price movement aligns with the longer-term opportunity. Steel pricing has reached a level where there is an asymmetric upside potential, and we are observing positive competitive trends with hot-rolled coil steel prices increasing. At current levels, the company is an attractive opportunity trading near net tangible asset value. BlueScope remains one of the highest quality steel producers globally, with a capable management team, a significant asset in Port Kembla, and the Colorbond brand, which not only boosts margins but also represents a substantial overseas opportunity.

## OUTLOOK

After initially embracing Trumponomics attention is now turning to the challenges of delivery and containing excesses in the economy, including the potential for inflation to return in 2025. The incoming administration will need all its political guile to deliver the much hyped agenda of reduced regulation, tax relief and spending cuts whilst also reducing the budget deficit. Bond vigilantes will no doubt be around to remind markets if they think that this ambitious mix of goals is not being achieved. Whilst bond markets have been wary of the period ahead equity markets in the United States continue to exhibit extreme exuberance and are once again trading at similar valuations to the Dotcom peak in 2000 and the post COVID bubble in 2021. Australian equity valuations, whilst stretched in some sectors, are not as out of kilter overall, especially as resources trade near multi year lows. The big question remains what happens in China where the economy flirts with deflation and whether authorities can pull off a sustained stimulus that Mario Draghi and Ben Bernanke did in 2012, such as QE3, that allayed market concerns about the commitment to reflation the economy.

---

The performance fee is equal to 20.50% of daily outperformance over the hurdle rate of return. The current hurdle rate is the Reserve Bank of Australia cash rate. Performance fees are accrued daily and payable six monthly, however will only be paid in the event that the Fund's return over the performance fee calculation period is positive and the performance fee accrual is positive. For further information on the calculation of the performance fee please consult the Fund's PDS.

This publication has been prepared by Perpetual Investment Management Limited (PIML) ABN 18 000 866 535, AFSL No 234426. It is general information only and is not intended to provide you with financial advice or take into account your objectives, financial situation or needs. You should consider, with a financial adviser, whether the information is suitable for your circumstances. To the extent permitted by law, no liability is accepted for any loss or damage as a result of any reliance on this information.

The PDS for the relevant fund, issued by PIML, should be considered before deciding whether to acquire or hold units in that fund. The PDS and Target Market Determination can be obtained by calling 1800 022 033 or visiting our website [www.perpetual.com.au](http://www.perpetual.com.au). No company in the Perpetual Group (Perpetual Limited ABN 86 000 431 827 and its subsidiaries) guarantees the performance of any fund or the return of any investor's capital. Total return shown for the fund(s) have been calculated using exit prices after taking into account all of Perpetual's ongoing fees and assuming reinvestment of distributions. No allowance has been made for contribution or withdrawal fees or taxation (except in the case of superannuation funds, as applicable). Past performance is not indicative of future performance.

---

## MORE INFORMATION

Adviser Services 1800 062 725

Investor Services 1800 022 033

Email [investments@perpetual.com.au](mailto:investments@perpetual.com.au)

[www.perpetual.com.au](http://www.perpetual.com.au)

